



SFIVET

SWISS FEDERAL INSTITUTE FOR
VOCATIONAL EDUCATION AND
TRAINING

*Swiss excellence in vocational
education and training*

SFIVET AT A GLANCE

Swiss Federal Institute for Vocational
Education and Training SFIVET
Kirchlindachstrasse 79
CH-3052 Zollikofen
+41 58 458 27 00
info@sfivet.swiss
www.sfivet.swiss

Issue May 2017

Unique Selling Propositions USP

USP 1

One-stop shop: single source

USP 2

Vocational didactics: practice-oriented

USP 3

**Swiss Observatory for Vocational Education and
Training: monitoring trends**

USP 4

Multilingualism: a Swiss trademark

USP 5

Bachelor + Master: system expertise for practitioners

USP 6

VET revision and review cycle: added value for clients

USP 7

Migration: for rapid integration

Stakeholders

Policymakers

Private sector

VET

Schools

Researchers

Vision

As Swiss university we are the trusted partner
for all matters relating to vocational education
and training today and in the future.

Four areas of focus

Basic training

Continuing
training

University

Research

Development of
occupations

Highlights

OBS

Digitisation

Top

MSc

Examiner
courses

German

French

Switzerland

Italian

International

**National structure – Regional presence –
International network**

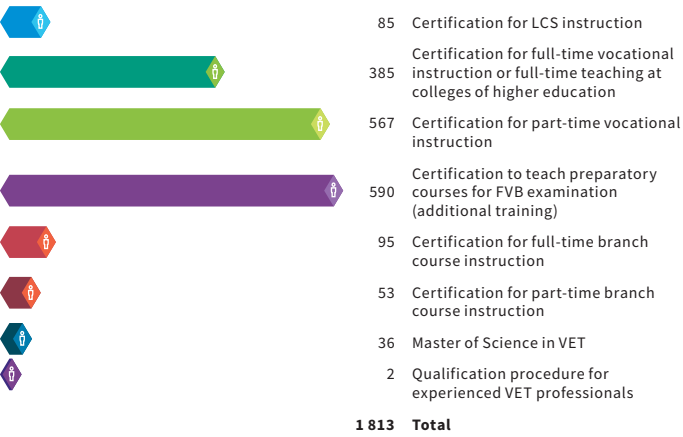
The Swiss Federal Institute for Vocational Education and Training SFIVET is the Swiss expert organisation for vocational education and training. We form VET practitioners, provide VET research, develop careers and further assist international education and training cooperation. Our offices are located in Lausanne, Lugano, Olten, Zollikofen near Bern and Zurich.

Training

- Strong practical relevance and constant willingness to innovate (inverted classes, bilingual teaching, use of ICT, etc.)
- Dual educational opportunities, where practical experiences serve as a peg for the theory, while the theory classes shine a light on the professional practice
- Accompanying measures serving as a proper link between theory and practice
- Pedagogical approaches that facilitate the compatibility of work and family
- Recognition of academic performance already rendered, in the form of equivalence
- Access to the final degrees by the validation procedure (validation of the educational performance)

www.sfivet.swiss/training

Enrolment figures – VET teachers and trainers

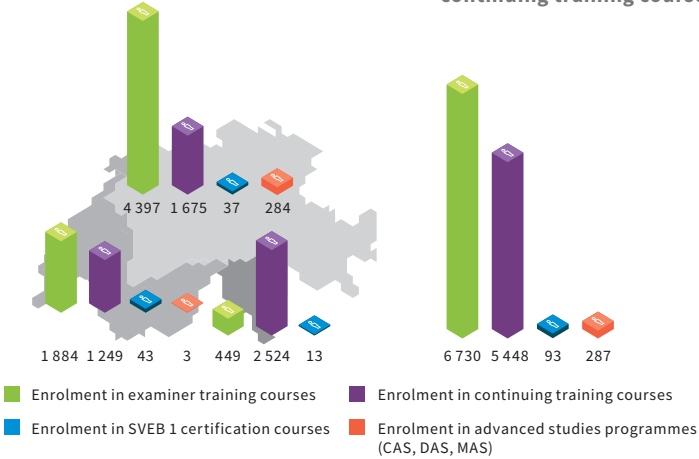


Continuing Training Division

- Advanced training courses
- Additional training CAS, DAS, MAS (with ECTS points)
- Customized, demand-oriented services and courses, locally based or at SFIVET
- Functional and development analyses in institutions
- Introductory and occupation-specific courses for examining experts
- We provide training, guidance and support to teachers, trainers and examiners within the Swiss VPET system
- We offer evidence-based services for practitioners, taking into account the development and evolution of occupations
- We contribute to life-long learning

www.sfivet.swiss/continuing-training

Key enrolment figures by linguistic region Total enrolment figures for continuing training courses



Research and development

We examine the existing relations between the education system and the labour market, thus ensuring an important contribution to the analysis, optimisation and improvement of vocational training in Switzerland.

Research areas

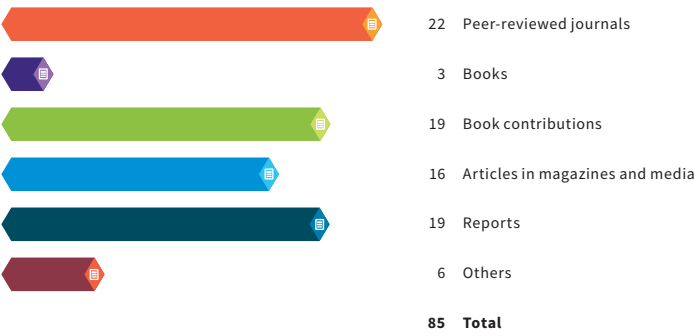
- 1: Teaching and learning in VET / PET programmes
- 2: Current VET / PET context
- 3: Strategic planning of VET / PET system

The Swiss Observatory for Vocational Education and Training (OBS SFIVET)

identifies, monitors and analyses social, economic and technological developments that have an impact on vocational education and training.

www.sfivet.swiss/research-and-development

Research output by type of publication



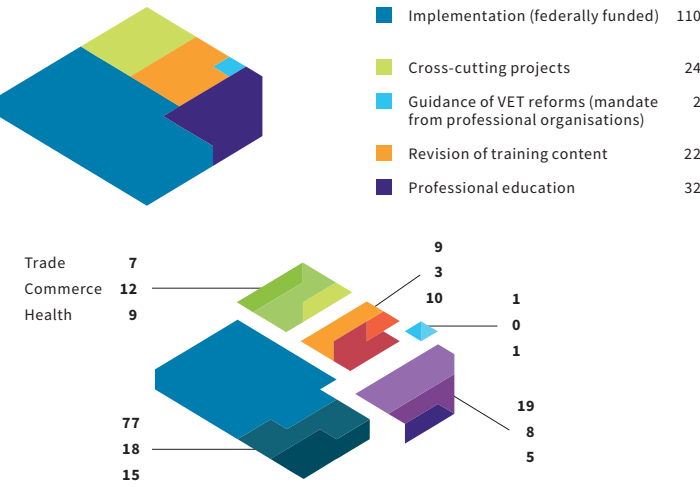
Development of Occupations

SFIVET’s Center for the Development of Occupations (CdO) offers methodological and pedagogical support to professional organisations (POs). This support covers all stages of the process of developing upper-secondary level VET programmes and tertiary-level PET programmes.

From job analysis up to 5-year inspection, the CdO’s range of services covers the whole process of professional development in the basic and higher vocational education and training. It also contains further services that are tailored to specific customer needs.

www.sfivet.swiss/cdo

Number of supported occupations by sector



International relations

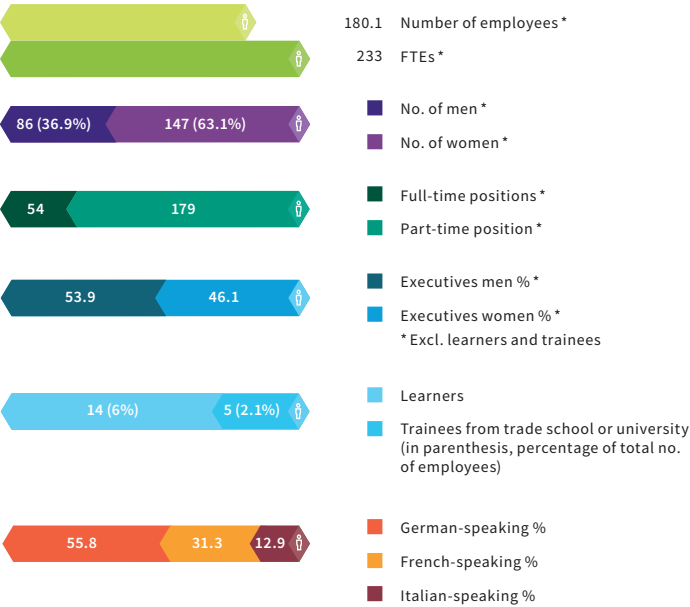
SFIVET is the national contact point for international cooperation.

SFIVET maintains a tight network of national and international partners from the business and research community. Switzerland is regularly called upon to share its expertise at the international level, whether it be welcoming foreign delegations, giving presentations at conferences or taking part in international projects.

www.sfivet.swiss/international



Overview of SFIVET staff



Finance

Amounts in '000 CHF

Revenue from services / research projects	3 096
Revenue from fees	3 194
Operating subsidies from the Confederation	39 969
Other revenue	223
Operating Income	46 482
Personnel costs	37 045
Property expenditure	4 876
Administrative expenses	1 231
IT costs	1 269
Other costs	1 446
Depreciation	177
Operating Expenses	46 044
Results from Continuing Operations	438
Financial expenses	3
Net result	435
Assets	7 259

Organisation Chart

